

Broadcasting on ill FM using Edcast and a Windows PC

by Richard FZV

I have an appalling hangover as I write this, so give us a call on 07980 645933 if anything doesn't make sense.

I'm assuming just a standard set-up of decks and a mixer with mic input for voiceover, as anything more complicated (i.e. playing both prerecorded digital sets and live vinyl sets) requires either a second audio mixer, or some decent internal routing in your soundcard or preferably both.

Edcast can be downloaded here:-

<http://www.oddsock.org/tools/edcast/>

the version you need is the stand-alone one:-

http://www.oddsock.org/tools/edcast/edcast_standalone_3.1.21.exe

this will stream everything that comes in to the audio in (line in) input of your soundcard out to our lovely listeners.

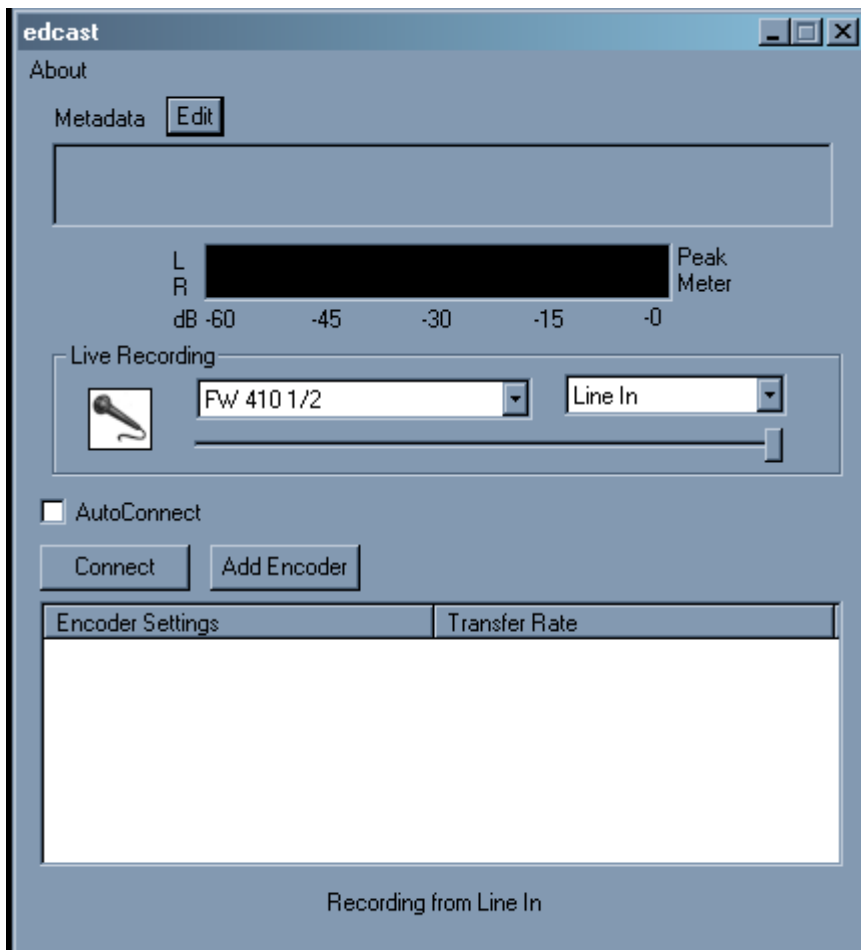
when you install Edcast, it will ask you if you want to use the LAME encoder codec – this is what you need to stream in MP3 format. unfortunately they can't supply this for legal reasons (i.e. someone actually owns the MP3 process and wants money each time it gets used) – so they give you a link to where you can download the codec off of some pikey site.

get the latest stable version (i.e. not a 'Beta'), download it and unzip the zip file.

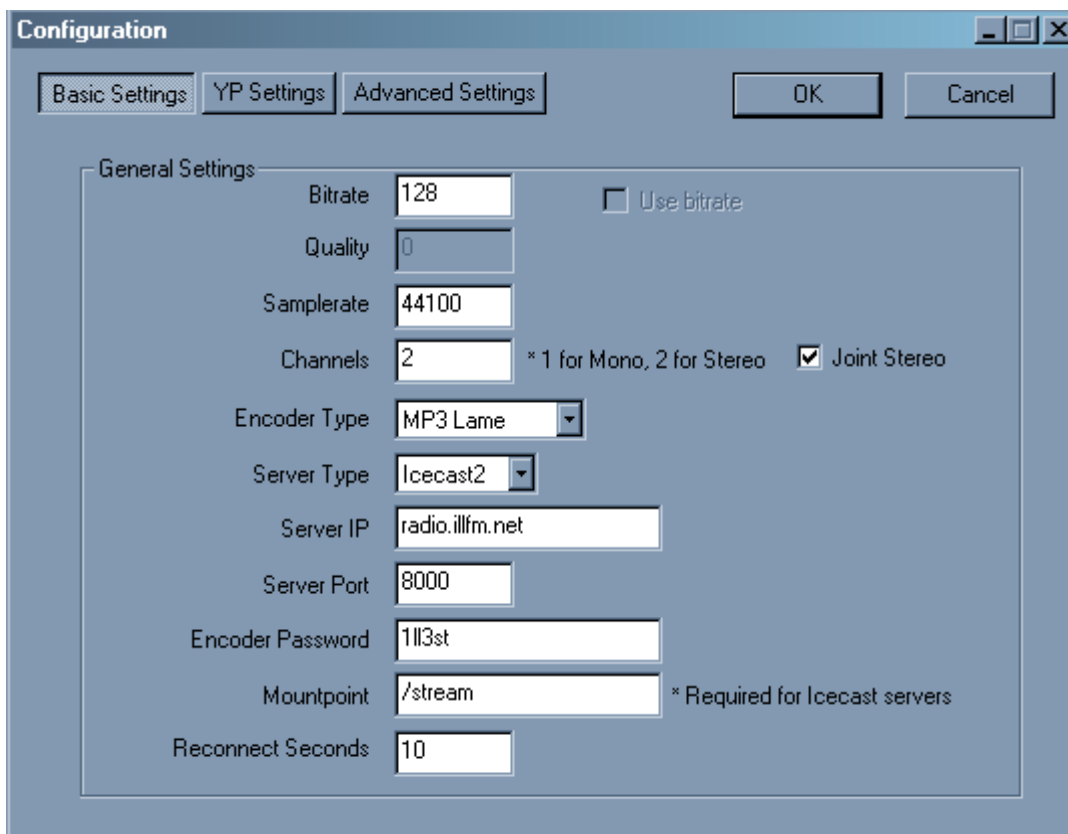
I've attached a copy of the file I use to this e-mail, if you wanna use that instead.

paste the file **lame_enc.dll** into your newly created Edcast folder.

now run Edcast. it will look like this, except blank:-



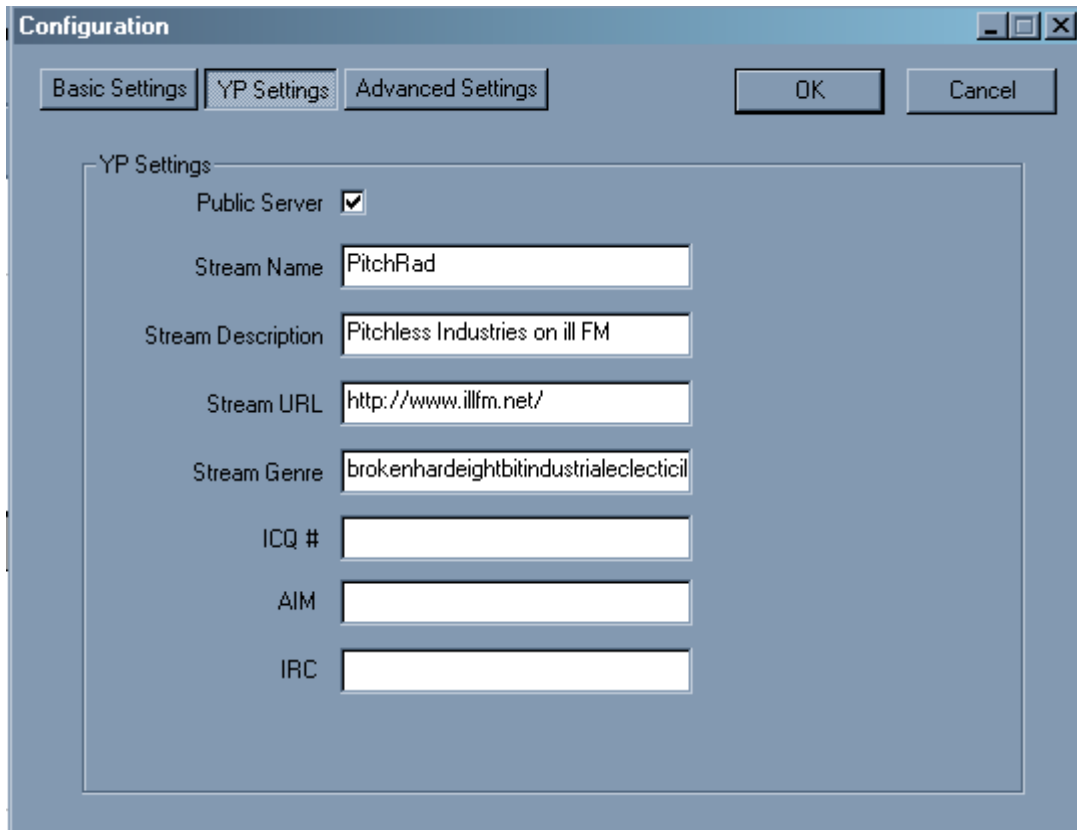
click 'add encoder' and you'll get this dialogue:-



on the 'basic settings' dialogue, fill in all the settings EXACTLY as I have done. this will connect you to the ill

FM stream.

next click on the 'YP settings' dialogue



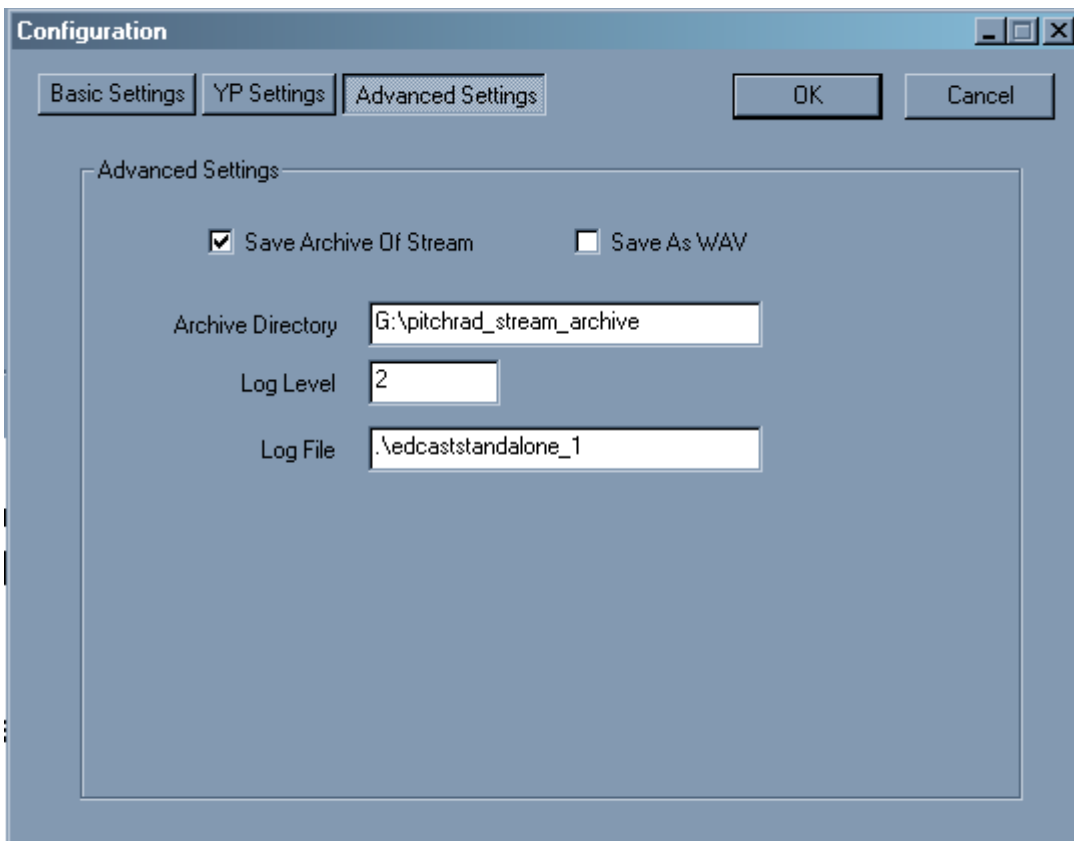
The image shows a 'Configuration' dialog box with three tabs: 'Basic Settings', 'YP Settings', and 'Advanced Settings'. The 'YP Settings' tab is selected. It contains the following fields:

- Public Server:** A checked checkbox.
- Stream Name:** A text box containing 'PitchRad'.
- Stream Description:** A text box containing 'Pitchless Industries on ill FM'.
- Stream URL:** A text box containing 'http://www.illfm.net/'.
- Stream Genre:** A text box containing 'brokenhardeightbitindustrialeclecticil'.
- ICQ #:** An empty text box.
- AIM:** An empty text box.
- IRC:** An empty text box.

At the top right of the dialog are 'OK' and 'Cancel' buttons.

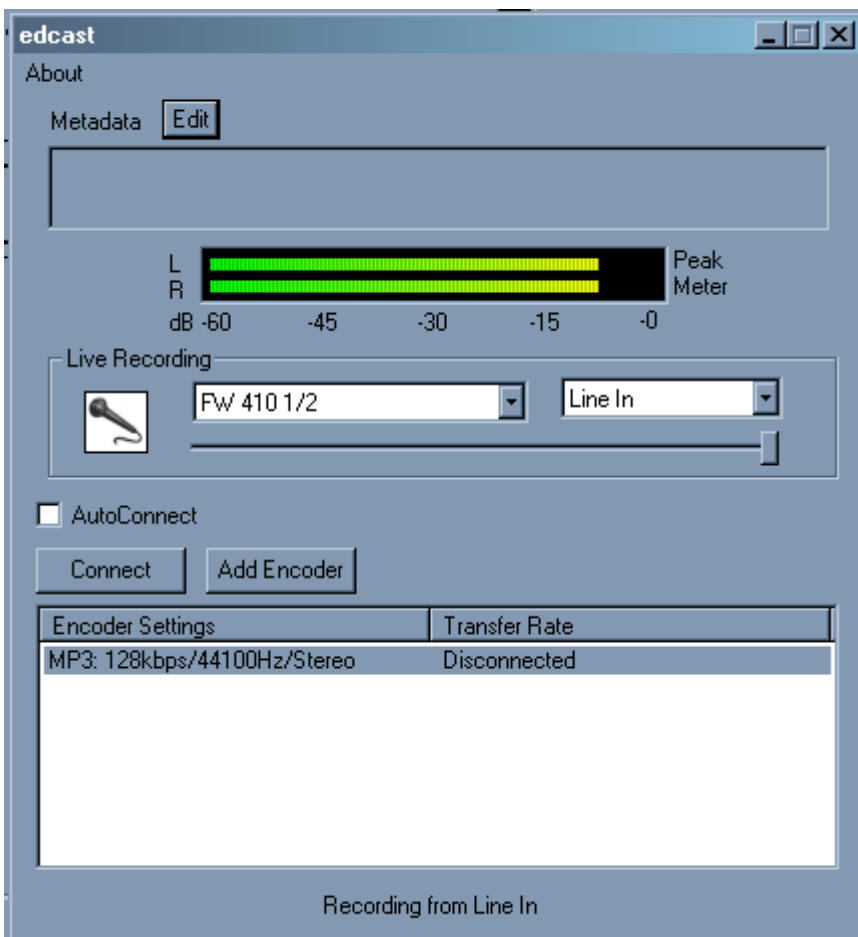
put in the name & description & genre of your show instead of the Pitchless wibble. leave the ICQ/AIM/IRC bits blank.

next click 'advanced settings'



tick the 'save archive of stream' box, and tell it where to save it.

click OK and you should be back to the front screen with something like this:-



put on a record and check there's something on the level meter, if not, select the correct input from the jump menus in the 'live recording' box. All the inputs on your soundcard should be there.

Then click connect – and you should be streaming live....

N.B. you should probably check here to see if anyone's listening before testing this !

<http://radio.illfm.net:8000/>

if you wanna put some metadata that shows up on people's media player programs to tell them what they're listening to, click the 'edit' button at the top, and put in some wibble, like this:-

Set / Lock Metadata

Manually Enter Metadata Lock Metadata

Metadata

Append String

* may take a song change to take affect

External Metadata

URL

File

Disabled

Interval (secs)

Grab Metadata From Window Title

Window Class

Truncate everything after and including this string

Truncate everything before and including this string

This isn't essential though.

Good luck !